

ROSE HISTORICAL SOCIETY

P.O. Box 304, 5016 North Main Street, North Rose, NY 14516



2023

NEWSLETTER

Vol. 33 No. 2

FARNSWORTH MUSEUM OPEN

2023 SEASON
JUNE 4 – OCTOBER 22

Sundays and Wednesdays
2:00 – 4:00
and
By Appointment
(315) 594-1657

ROSE HISTORICAL SOCIETY NEWSLETTER

Published four times a year,
the RHS Newsletter contains
Society updates,
museum information,
and historical accounts
of people, places and events
connected with the
Town of Rose.

Please send newsletter
suggestions or submission
articles to Lucinda Collier,
4866 Covell Rd, North Rose,
NY 14516 or email to
cinda624@gmail.com

O. A. SKUTT COMPANY BEAN HOUSE

In the early to mid 1900s, the Bean House in North Rose was a thriving business. Located next to the railroad tracks west of the main street on the former York Malt House site (destroyed by fire in May 1891), it was not really a “house” but a huge warehouse-type building. Constructed by the Skutt-Welch-Aldrich Co. in 1915, it housed a wholesale produce business engaged chiefly in the purchase, grading, packing and distribution of fresh fruits, vegetables, beans and grain. When Edward Welch died in February 1917, the two remaining partners bought out his interest from his estate, forming the Skutt-Aldrich Co. Inc., and when Clarence Aldrich died in August 1918, Orin A. Skutt bought out his interest from his estate and O. A. Skutt & Co. was formed. Then, in September 1926, Orin’s son A. Gray Skutt became a partner with the business name changing to Orin A. Skutt and A. Gray Skutt. Lastly, in August 1931, the business was incorporated under the name O. A. Skutt Co. with A. Gray Skutt President, Orin A. Skutt Vice-President, and O. Watson Skutt Secretary-Treasurer. At this time, kidney beans, a relatively new crop in the Rose area, were added to the operation.



The Skutt-Welch-Aldrich Company Packing House

Orin A. Skutt (b.1878-d.1933) was a remarkable man who owned several fruit farms and had an apple drying business with Edward Salter in addition to the wholesale fruit and vegetable operation with Welch and Aldrich and later, with his son Gray. In his lifetime, Orin A. was also a Rose supervisor, highway superintendent, one time postmaster, partner in a hardware store with John Gray, fire commissioner, school board member and trustee of the North Rose Methodist Church. Upon his death in November 1933, the Orin A. farms were left to son A. Gray Skutt and the O. A. Skutt Company to son O. Watson Skutt.

Skutt, Welch, Aldrich Company. Packing House



Left to Right: Bill Quereau, George Conley, Ed Foster, -?-, Homer Stone, -?-, Clint Dillingham, Josh McGee, Ed Welch, Dan Van Houte

In 1933, A. Gray, still running the O. A. Skutt Co., changed the operation exclusively to kidney beans – thus the name Bean House. Under his capable management, the business took in beans from as many as 50 area farmers, imported more by rail, expanded with the establishment of bean houses in other communities, and sold and shipped bagged beans all over the United States and Latin America. In addition to being a successful businessman, A. Gray was a trustee of the North Rose Methodist Church, a director of the 1st National Bank of Wolcott, and a member of the North Rose Central School Board. He was also active in the Masonic Lodge 590, the North Rose Fire pods, the Rose Grange, and the Boy Scout Committee. Like his father, he was a busy, community service-minded man.



For the town of Rose, the Bean House business was a valuable asset and contributor to the local economy – for farmers, the many full-time men and part-time women employed in the operation, interconnected community businesses and services, and of course, the railroad. Often called an “elevator,” the bean house was a clever and efficient system of conveyor belts, chutes and gravitational assistance. The following describes the process:

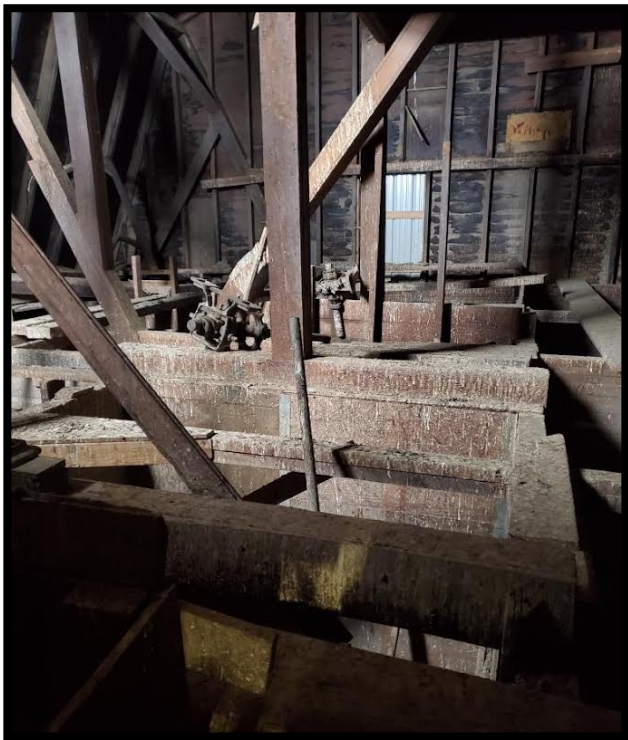
1. From Wagon to Cellar.

Farmers brought picked and threshed (pods removed) beans to the Bean House in wagons and later, trucks. Backed up to a large ground level window open to the cellar, beans were shoveled off onto a chute extending up through the window to the wagon. Sliding down the chute, beans fell into a cone-type wooden square hopper that permitted an allowed amount of beans to continuously fall out the bottom onto a moving, horizontal conveyor belt.

2. From Cellar to Third Floor Storage.

The conveyor belt dumped its beans into wooden boxes attached to a vertical moving conveyor belt that went from the cellar all the way to the third floor. There, as the boxes went round to return to the cellar, beans were dumped into a moveable chute where they slid into huge wooden storage bins attached to the floor. As one bin filled, the chute was moved on to the next. Beans were stored in their bins here until the second floor process was ready to receive them.

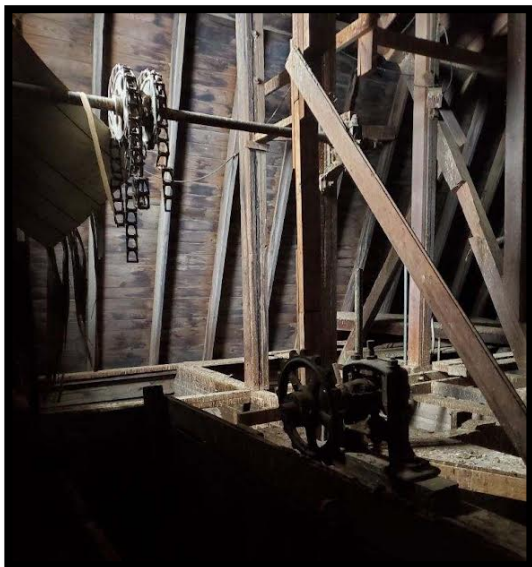
Third floor wooden structure showing the tops of bins.



On of six bins.



Ladder inside bin.



3. From Third Floor Storage to Second Floor Sorting.

The Storage Bins had trap door openings in their bottoms that extended through the Bean House floor to the second floor. Beans, one bin at a time, fell through the opening onto a horizontal conveyor belt below. The belt dumped the beans into another square wooded hopper at the end. This hopper dropped the allowed amount of beans onto a chute that slid the beans onto another horizontal conveyor

belt. Here, women sitting on both sides of the moving belt, sorted white beans from red, removed any remaining bean pods, bad beans, plant leaves, and anything else that didn't belong'

Wooden chute located on the 3rd floor delivering beans to a wooden hopper



Beam with gouge marks from knives.



In 1984, the O A Skutt Company was dissolved and the building sold to the Vanderveer and Coleman Company (incorporated from 1924 to 1993) that also had kidney bean facilities in Lyons and Elbridge. Today, Gary Poole owns the building where he houses his amazing display of electric trains. Thankfully, he has preserved many of the features of the old Bean House – a tribute to the building's past, the people who worked there, and Rose history.

4. From Second Floor Sorting to First Floor Bagging.

From the Sorting Conveyor Belt, beans fell through a floor opening into another holding hopper on the first floor where men waiting below held empty sacks, filled them with the falling beans, and then sewed the bag tops closed. The strong hemp twine came from big spools and was cut off with sharp knives – when not in use, the men stuck their knives into the beams of the Bean House causing thousands of slit marks. The 80-pound sacks were then set aside to await boxcar loading.

5. From First Floor Bagging to Box Car Loading.

Bags of beans were loaded into boxcars waiting on the track siding next to the Bean House. Full boxcars were then attached to a locomotive and taken away for distribution.

Office of O. A Skutt Co.

Located across the street from the Bean House;



Many thanks to Alex Skutt, grandson of A. Orin Skutt and son of A. Gray Skutt, for the history of his family in connection with the O. A. Skutt Company "Bean House" and to Gary Poole for the current interior photos of the Bean House building.

ROSE HISTORICAL SOCIETY BOARD OF DIRECTORS

The 2023-2024 Organizational Meeting of the RHS Board of Directors was held July 24 with the following officers elected and Committee Chairpersons appointed:

President - Lucinda Collier
Vice President - Janet Clingerman
Secretary – Jennifer Murphy
Treasurer - Susan Acker
Building & Grounds – Henry Dunphy
Accounting, Audit, Insurance – Susan Acker
Membership – Aaron Petrosino
Museum Curator – Sandie Hunt
Museum Docent Coordination and Facebook Website – Maggi Lawrence
Museum Recertification and Museum Gift Shop – Jennifer Murphy
Newsletter, 4th Grd. Visit, Grants – Cinda Collier
Programs and Publicity – Janet Clingerman

Although not Board Members, special recognition and thanks to Ginny Robinson for Museum Archival Accession and Janet and Dave Fremouw for the beautiful museum landscaping. Also established were yearly calendar dates for monthly Board of Director meetings, anticipated programs, membership renewal and newsletter publications.

MEMORIAL DESIGNATIONS

During the last year, the RHS has been the grateful recipient of donations from the following memorial designations: In memory of Robert Fox

In memory of Neal Jewell

In memory of Elizabeth Whitmore

The Society mourns the loss of these valued members and extends deepest condolences to their families and friends.

ROSE HISTORICAL SOCIETY FACEBOOK

Do you know you don't have to be a Facebook member to access our site. Just type "Rose Historical Society" in your computer's Search, and our Farnsworth Museum site on Facebook will come up. Click on that, and you'll be there! Enjoy seeing artifacts and photos from our museum, reading viewer's comments and adding your own, and keeping up with RHS news.

A.R.P.A. GRANT RECEIVED

The Rose Town Board has again granted funds to the RHS from the American Rescue Plan Account. Funneled through and administered by local municipalities, these Federal funds are for relieving non-profit organizations with financial losses due to the past Covid restrictions. Last year, the RHS was awarded \$5000 towards Phase 1 of our Museum Handicapped Accessibility Project in which we redid our two small bathrooms to create one large handicapped accessible bathroom. This year, we have been awarded \$6500 to accomplish Phase 2, completing the Project, in which we will install a new widened museum back door, construct an approach ramp with appropriate landings, establish a handicapped parking area and accomplish related interior work. Contractor Joe Angelo is expected to begin project work in the near future.

We are most grateful to the Rose Town Board for the financial assistance to bring the museum into compliance with Americans with Disabilities Act regulations and thus be accessible to everyone.

FARNSWORTH MUSEUM

While many museums are town properties and maintained by them, our Farnsworth Museum is owned and maintained by the Rose Historical Society through membership dues and with the generous financial support of the following benefactors:

Town of Rose \$2500
Marshall Family Foundation \$2000
Friends of the Rose Post Office \$1000
Marshall Farms Group, LTD \$500
Sustaining Museum RHS Members \$3000
Craig and Mary Farnsworth
E. Seth Jenks
Geoff and Deborah Hunt
Lucinda Collier

Thank you all for your commitment to the RHS and the preservation to Rose History.

WAYNE COUNTY BICENTENNIAL AUGUST EVENTS

Aug. 14-18 Wayne County 200-Mile Torch Relay
Aug. 19 Family Fun Day at the Wayne County Fair
Lots of WC History to see and do!

BARBER SHOP GRAND OPENING

The June 4 Season Opening of the Museum celebrated official opening of the Barber Shop to the public. Prior to Museum Curator Sandie Hunt cutting the opening ribbon, Kim Virts Borden shared the building's history and stories of barbers Joe Ghent and her father Bob Virts, followed by Laurie Navratil reading some memories people had written for inclusion in the Barbershop Memory Book. The Barber Shop is a tribute to local businesses of Rose's past and a wonderful addition to the Museum. Many thanks to the Virt's family for the donation of the building to the Rose Historical Society, Mike Virts for repair and upgrades to the structure, Kim Virts Borden and Laurie Navratil for their hard work and on-going dedication to the restoration of the interior, and Janet and Larry Clingerman for the outside Barber Pole so all will know the building's past use. The Barber Shop is open to the public throughout the season on Sundays and Wednesdays from 2:00-4:00 or by appointment.

Kim Borden, Laurie Navratil



MURAL UNVEILING

The June 4 Season Opening of the Museum, celebrated the unveiling of two murals depicting Rose history - one of Rose Valley's Pimm's Hotel with the Clyde-Rose-Wolcott stagecoach that transported people and mail daily, and the other of North Rose's Cottage Inn and the train that ran along the lakeshore between Watertown and Lewiston. The murals were designed and painted by Annabelle Arthur and Laryssa Moore from local Girl Scout Troop #40549 to celebrate the Wayne County Bicentennial in our town. Supported by Scout Leaders Melissa Arthur and Shannon Moore and local artist Joy Reynolds, these Eight Graders earned the Girl Scout's esteemed Silver Award for this significant project. Recognitions were presented by Wayne County Bicentennial Committee Co-Chair Rosa Fox, Area Support Manager of Girl Scouts of NY-PENN Pathways Leah Bardo, and Rose Historical Society Board Member Jennifer Spade Murphy. The murals are on the museum's south side windows – be sure to notice Annabelle and Laryssa on the porch of Pimm's Hotel!

Annabelle



Laryssa

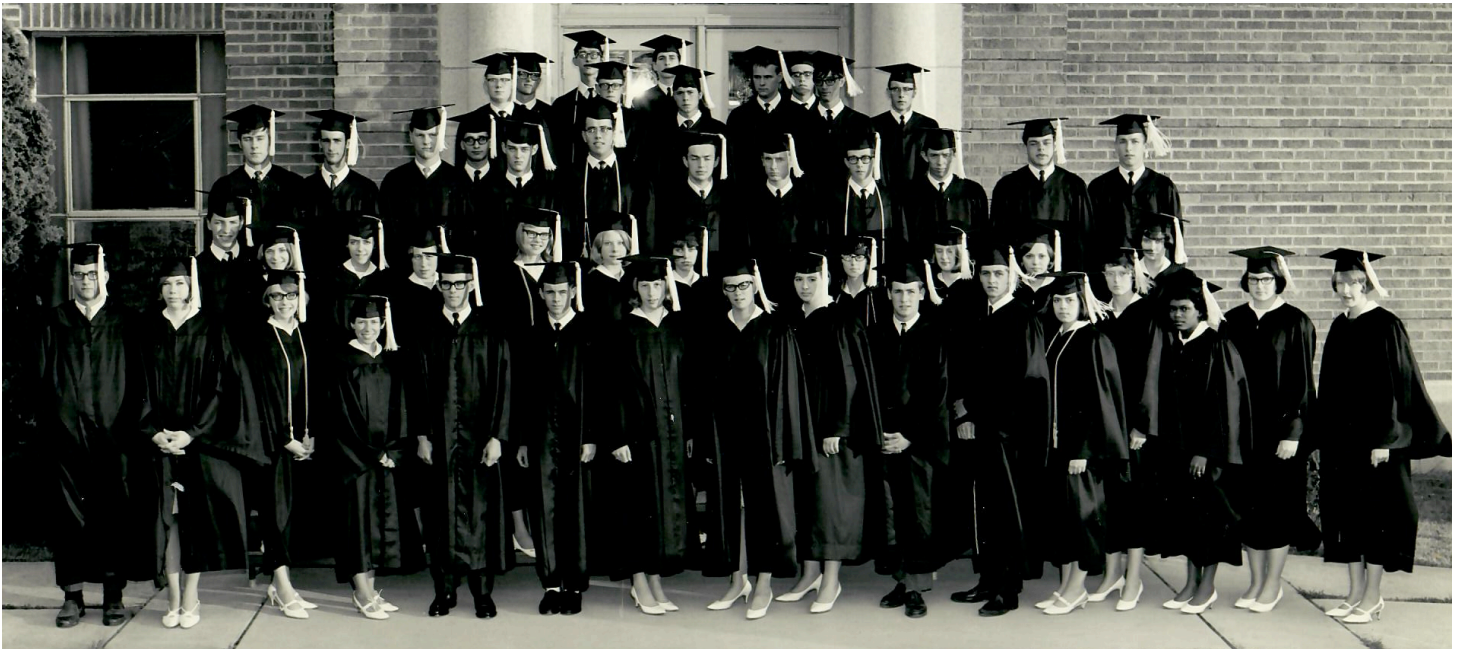


NORTH ROSE CENTRAL SCHOOL - CLASS OF 1945



ROW 1: Eleanor Bastian (m. Tellier), Ruth Seymour (m.-), Ida DeRuischer (m.-), Arlene Stublely (m. Youngman), Phyllis Skinkles (m.-), Ruth Richardson (m.-), Jeanette Pierson (m. Caves), Elizabeth Dillingham (m. Acker).
ROW 2: Larry Marshall, Glenn Clum, Margaret Anthony (m. Rising, Fontaine), Barbara Marshall (m. Campbell), Anna Wallace (m-), Gene Teeple, Quentin MacDonal, Boyce Yancey

NORTH ROSE CENTRAL SCHOOL – CLASS OF 1967



ROW 1: Kenan Baldrige, Nancy Edmonds, Kathy Fox, Marcia Hoad, Nick Brendes, Richard Ryther, Ginny Collier, Claudia Barnes, Linda Coonrod, Bart Hayes, Gene Sherman, Carol Price, Ann Stevens, Jackie Williams, Mary Ann Wilson, Maureen Murphy.
ROW 2: Leon Oaks, Carol Durbin, Shirley Green, Barbara Lester, Esther Cahoon, Sue Thomas, Peggy Staderman, Pat Barber, Jeanne Adams, Sue Powell, Karen Peck.
ROW 3: Bob Castor, Clint Acker, Steve Blauvelt, Steve Lane, Doug Ball, Bernard Taft, Steve Hackney, Mike Bliss, Steve Davenport, David Burns, Raymond McQueen.
ROW 4: Scott Smith, Randy Bowden, Jim Thomas, Jim Bets, Gregg Thomas, Steve Leg, Keith Norris, Bob Langdon, Steve Lewis, John Foro, Gale Guthrie.

